



Bullock, Bennett & Associates, LLC

www.bbaengineering.com
165 N. Lampasas St. • Bertram, Texas 78605 • (512) 355-9198

POST CLOSURE PLAN - ADDENDUM NO. 2

**Martin Lake Steam Electric Station – PDP-5
Rusk County, Texas**

Submitted to:

Luminant Generation Company LLC

Submitted by:

BULLOCK, BENNETT & ASSOCIATES, LLC

165 N. Lampasas Street

Bertram, Texas 78605

(512) 355-9198

Texas Professional Engineering Firm No. 8542

Texas Geoscience Firm No. 50127

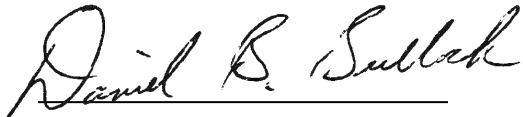
February 2024

BBA Project No. 24643-01-2024

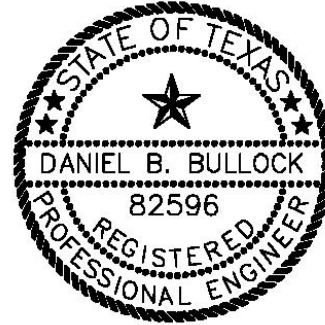
PROFESSIONAL CERTIFICATION

Bullock, Bennett & Associates, LLC (BBA) is certifying this document to address the Texas Commission on Environmental Quality (TCEQ) Notice of Deficiency (NOD) No. 3 comments for the Martin Lake Steam Electric Station issued December 22, 2023. The information submitted is, to the best of my knowledge and belief, true, accurate, and complete.

I hereby certify that Addendum No.2 to the Post Closure Plan for the PDP-5 at the Martin Lake Steam Electric Station has been prepared in accordance with the requirements of 40 C.F.R. §257.102(b).



Daniel B. Bullock, P.E.
Principal Engineer
Bullock, Bennett & Associates, LLC



Date 2/26/2024

TABLE OF CONTENTS

LIST OF APPENDICES	II
DOCUMENT REVISION RECORD	III
1.0 INTRODUCTION.....	1
2.0 PDP-5 POST CLOSURE PLAN REVISIONS.....	1
2.1 REVISIONS TO POST CLOSURE PLAN, PDP-5, FIGURE 3 – PROPOSED FINAL COVER GRADING PLAN.....	1
3.0 REFERENCES.....	2

LIST OF APPENDICES

APPENDIX A POST CLOSURE PLAN, PDP-5, FIGURE 3

DOCUMENT REVISION RECORD

Issue No.	Date	Details of Revisions
Revision 0	October 2016	Original Document
Addendum 1	December 2022	Updated configuration of final cap/cover system for PDP-5 and updated Facility contact information.
Addendum 2	February 2024	Revised Figure 3, Proposed Final Cover Grading Plan, to add statement that final elevations will be provided during closure of the CCR unit; signed, sealed and dated by Texas Licensed P.E..

1.0 INTRODUCTION

On behalf of Luminant Generation Company LLC (Luminant), Bullock, Bennett & Associates, LLC (BBA) has prepared this Addendum No. 2 to the Post Closure Plan for Permanent Disposal Pond No. 5 (PDP-5) located at the Martin Lake Steam Electric Station (MLSES) in Rusk County, Texas (hereafter, the “Site”). Coal Combustion Residuals (CCR) including flue gas desulfurization (FGD) wastewater and bottom ash generated as part of MLSES operation are managed in PDP-5. PDP-5 is regulated as Existing CCR Impoundments under 40 C.F.R. §257, Subpart D (the “CCR Rule”), which has been adopted by the State of Texas under 30 T.A.C. §352.

The original PDP-5 Post Closure Plan (PBW, 2016) and Post Closure Plan Addendum No. 1 (WSP Golder, 2022) was prepared in October 2016 and December 2022, respectively, in accordance with 40 C.F.R. §257.102(b) and placed in the MLSES operating record in accordance with 40 C.F.R. §257.105(h)(10). This Addendum No. 2 updates the Post Closure Plan to incorporate the changes described in Section 2.0.

2.0 PDP-5 POST CLOSURE PLAN REVISIONS

The following revisions were made to the PDP-5 Post Closure Plan in Addendum 2.

2.1 REVISIONS TO POST CLOSURE PLAN, PDP-5, FIGURE 3 – PROPOSED FINAL COVER GRADING PLAN

PDP-5 Figure 3 was revised with the signature and seal of a Texas Licensed P.E. and dated accordingly. Additionally, a statement was added to the drawing stating that final elevations for the CCR unit would be provided during closure. The revised drawing can be found in Appendix A of this Addendum.

3.0 REFERENCES

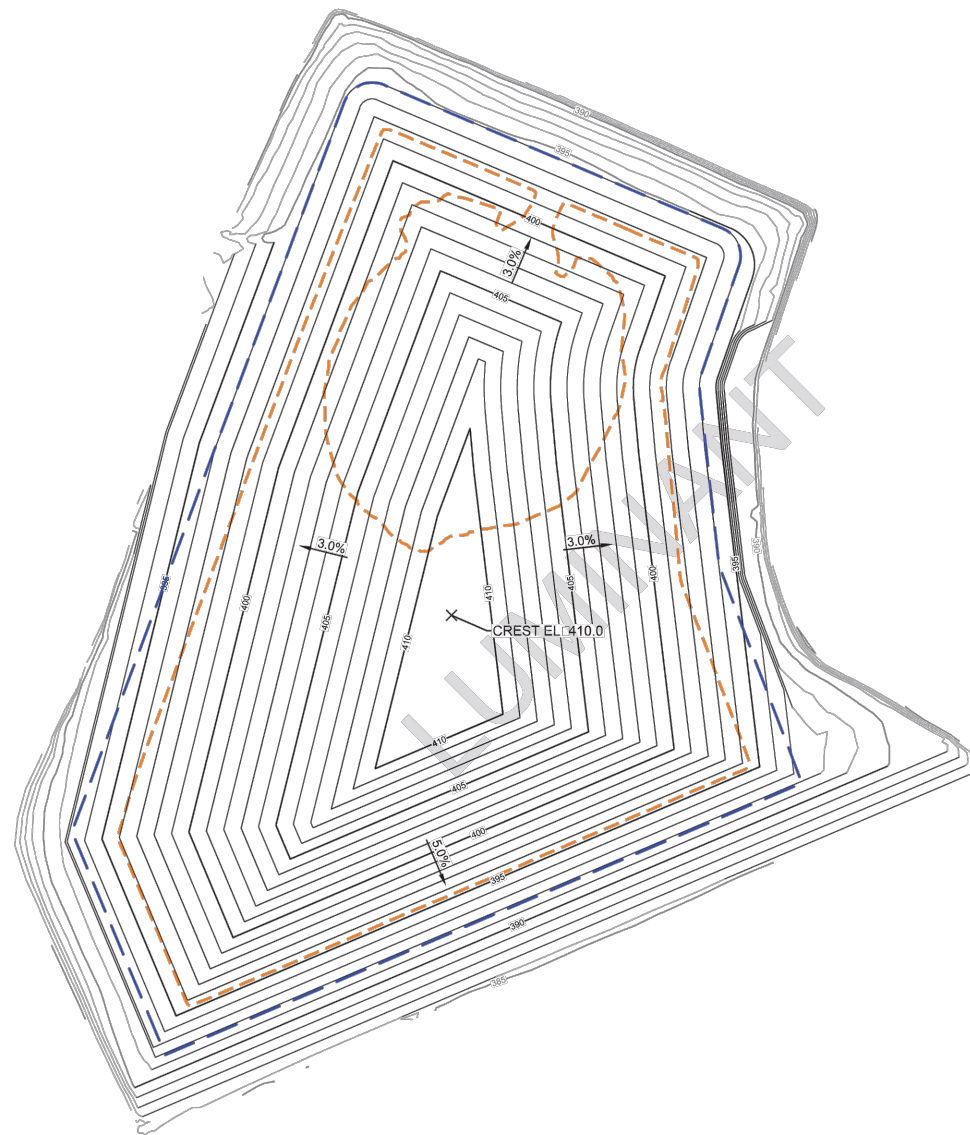
Pastor, Behling & Wheeler, LLC (PBW), 2016. CCR Post Closure Plan – Permanent Disposal Pond 5, Martin Lake Steam Electric Station. October.

WSP Golder, 2022. CCR Post Closure Plan Addendum No. 1 – Martin Lake Steam Electric Station – PDP-5. December.

APPENDIX A

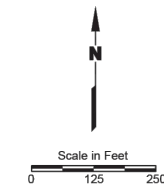
Post Closure Plan, PDP-5, Figure 3

APPENDIX G-Revision 1 December 15, 2022



EXPLANATION

- Proposed Finished Grade Contour
1 ft Interval
- Proposed Finished Grade Contour
5 ft Interval
- - - Proposed Limits of CAP
- - - Estimated Limits of CCR
(Elev. 400.5)



LUMINANT GENERATION COMPANY, LLC
 MARTIN LAKE STEAM ELECTRIC STATION

Figure 3

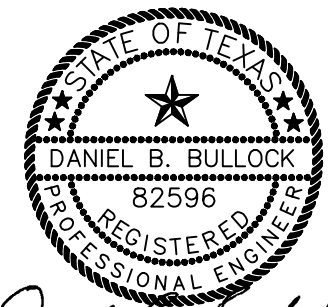
**PROPOSED
 FINAL COVER GRADING PLAN**

PROJECT: 5196B	BY: A/JD	REVISIONS
DATE: SEPT., 2016	CHECKED: BDT	

PASTOR, BEHLING & WHEELER, LLC
 CONSULTING ENGINEERS AND SCIENTISTS

NOTE:

FINAL ELEVATIONS FOR THE UNIT
 WILL BE PROVIDED AT CLOSURE.



Daniel B. Bullock
 2-8-2024

**Luminant
 Martin Lake Steam Electric Station**
 Figure 3
**PROPOSED FINAL COVER
 GRADING PLAN**

PROJECT: 24643	BY: RCAD-RR	DATE: FEB 2024	CHECKED: DBB
----------------	-------------	----------------	--------------

Bullock, Bennett & Associates, LLC
 Engineering and Geoscience
 Texas Registrations: Engineering F-8542, Geoscience 50127